

# Academic Advisors Are Here for You!



Through **The Office of Academic Support & Advising (OASA)**, our team of Advisors is here to provide you with personal and academic support while you pursue your degree or certificate. Your assigned advisor will help you navigate schedule changes, connect with financial aid for inquiries, communicate with faculty, curriculum mapping, standardized testing, and setting up tutoring and counseling sessions. Don't hesitate to contact your advisor when you need assistance.

**Main phone #: (212) 380-9004**

## **FRESHMAN EXPERIENCE ADVISORS:**

**Micah Roldan** - [broldan@mildred-elley.edu](mailto:broldan@mildred-elley.edu) x1651  
**Freille St. Ange** - [fstange@mildred-elley.edu](mailto:fstange@mildred-elley.edu) x1615

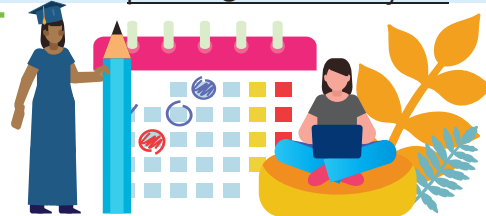
**Did you know?** All new students are assigned a **Freshman Experience Advisor** for their first successful Mod. Students will be reassigned to an **OASA Student Advisor** after they've passed their first Mod.

## **OASA STUDENT ADVISORS:**

**Patricia Anglero** - [panglero@mildred-elley.edu](mailto:panglero@mildred-elley.edu) x1646  
**Sasha Delaquis** - [sdelaquis@mildred-elley.edu](mailto:sdelaquis@mildred-elley.edu) x1653  
**Jessy Gonzalez** - [jgonzales@mildred-elley.edu](mailto:jgonzales@mildred-elley.edu) x1640  
**Annesia Maharaj-Nesbit** - [amaharaj-nesbit@mildred-elley.edu](mailto:amaharaj-nesbit@mildred-elley.edu) x1604  
**Julian Montalvo** - [jmontalvo@mildred-elley.edu](mailto:jmontalvo@mildred-elley.edu) ext. 1672  
**April Narsasian** - [anarsasian@mildred-elley.edu](mailto:anarsasian@mildred-elley.edu) x1758  
**Onika Oliver** - [ooliver@mildred-elley.edu](mailto:ooliver@mildred-elley.edu) x1699  
**Asha Rani** - [arani@mildred-elley.edu](mailto:arani@mildred-elley.edu) x1609  
**Jacqueline Robles** - [jrobles@mildred-elley.edu](mailto:jrobles@mildred-elley.edu) x1742  
**Clarissa Martinez-Roman** - [cmartinez@mildred-elley.edu](mailto:cmartinez@mildred-elley.edu) x1704  
**Phil Roman** - [proman@mildred-elley.edu](mailto:proman@mildred-elley.edu) x1702

## **The Office of Academic Support & Professionalism (ASAP)**

provides tutoring, study seminars, skills workshops, and emotional and mental health support. They host events each mod to support the educational and personal success of Mildred Elley students. Contact them for a session today!



## **TUTORING:**

If you'd like to take advantage of our tutoring services, please email: [ASAPtutoring@mildred-elley.edu](mailto:ASAPtutoring@mildred-elley.edu)

## **COUNSELING:**

Feeling Stressed or Anxious? We think it's important to provide all of our students with emotional and mental health support. To make an appointment to speak with a professional counselor, email: [ASAPcounseling@mildred-elley.edu](mailto:ASAPcounseling@mildred-elley.edu)