

Academic Advisors Are Here for You!



Through **The Office of Academic Support & Advising (OASA)**, our team of Advisors is here to provide you with personal and academic support while you pursue your degree or certificate. Your assigned advisor will help you navigate schedule changes, connect with financial aid for inquiries, communicate with faculty, curriculum mapping, standardized testing, and setting up tutoring and counseling sessions. Don't hesitate to contact your advisor when you need assistance.

Main phone #: (212) 380-9004

FRESHMAN EXPERIENCE ADVISORS:

Micah Roldan - mroldan@mildred-elley.edu x1651
Freille St. Ange - fstange@mildred-elley.edu x1615

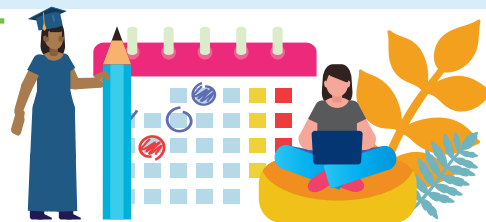
OASA STUDENT ADVISORS:

Patricia Anglero - panglero@mildred-elley.edu x1646
Sasha Delaquis - sdelaquis@mildred-elley.edu x1653
Annesia Maharaj-Nesbit - amaharaj-nesbit@mildred-elley.edu x1604
Julian Montalvo - jmontalvo@mildred-elley.edu ext. 1672
April Narsasian - anarsasian@mildred-elley.edu x1758
Onika Oliver - ooliver@mildred-elley.edu x1699
Asha Rani - arani@mildred-elley.edu x1609
Jacqueline Robles - jrobles@mildred-elley.edu x1742
Clarissa Martinez-Roman - cmartinez@mildred-elley.edu x1704
Phil Roman - proman@mildred-elley.edu x1702

Did you know? All new students are assigned a **Freshman Experience Advisor** for their first successful Mod. Students will be reassigned to an **OASA Student Advisor** after they've passed their first Mod.

The Office of Academic Support & Professionalism (ASAP)

provides tutoring, study seminars, skills workshops, and emotional and mental health support. They host events each mod to support the educational and personal success of Mildred Elley students. Contact them for a session today!



TUTORING:

If you'd like to take advantage of our tutoring services, please email: ASAPtutoring@mildred-elley.edu

COUNSELING:

Feeling Stressed or Anxious? We think it's important to provide all of our students with emotional and mental health support. To make an appointment to speak with a professional counselor, email: ASAPcounseling@mildred-elley.edu